

NOTE: ALL DISTANCES SHOWN TO RIGHTS-OF-WAY, FENCES, UTILITIES AND OTHER EXISTING OBJECTS ARE FROM CENTERLINE OF SURVEY.

CONTRACTOR TO MEET AND MATCH EXISTING ROADWAY STA. 22+00. SHAPE TO DRAIN STA. 21+75± TO STA. 22+00.

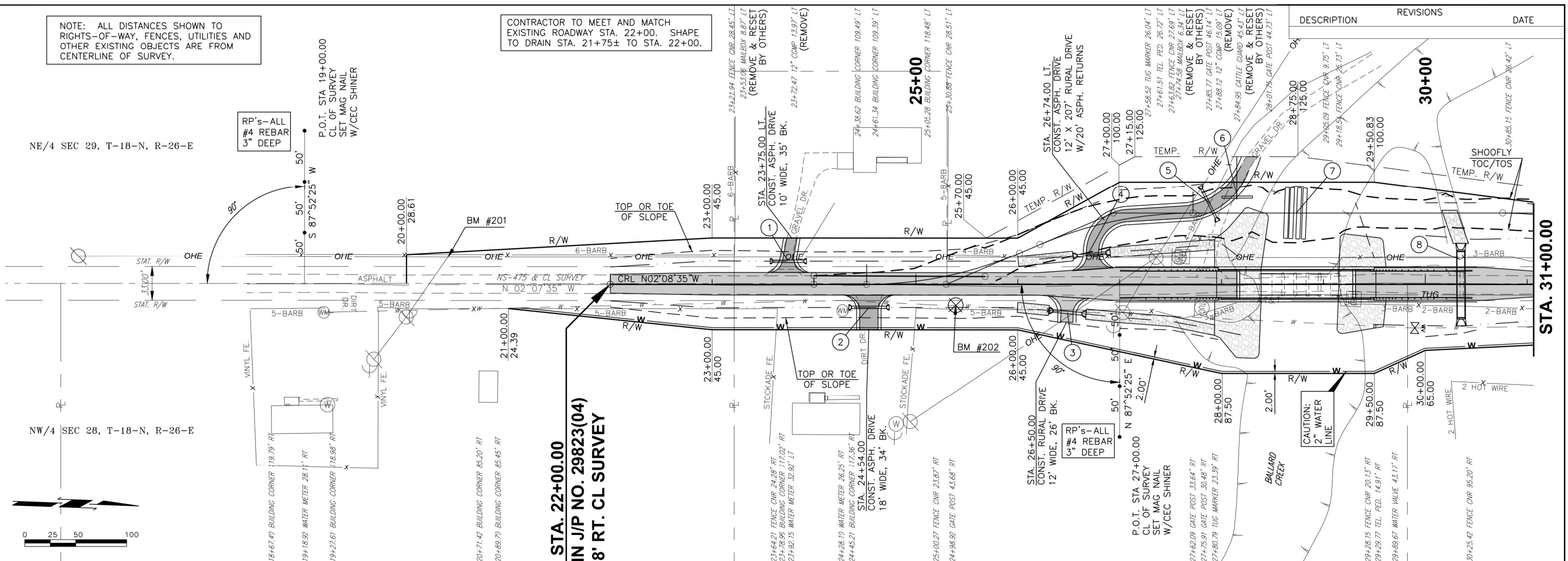
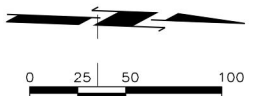
DESCRIPTION	REVISIONS	DATE

NE/4 SEC 29, T-18-N, R-26-E

NW/4 SEC 28, T-18-N, R-26-E

RP's-ALL #4 REBAR 3" DEEP

P.O.T. STA 19+00.00 CL OF SURVEY SET MAG NAIL W/CEC SHINER



SHOOLLY - SUMMARY OF GRADING QUANTITIES	
EXC.	1,072 C.Y.
EMB.+20%	996 C.Y.
EXCESS EXC.	76 C.Y.

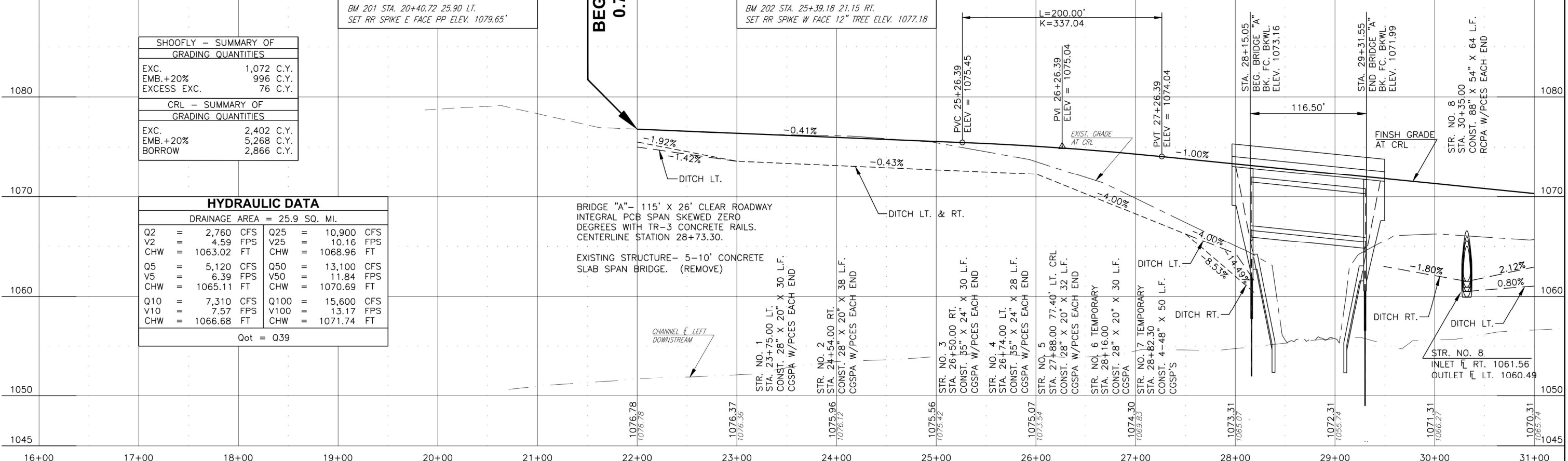
CRL - SUMMARY OF GRADING QUANTITIES	
EXC.	2,402 C.Y.
EMB.+20%	5,268 C.Y.
BORROW	2,866 C.Y.

HYDRAULIC DATA			
DRAINAGE AREA = 25.9 SQ. MI.			
Q2 =	2,760 CFS	Q25 =	10,900 CFS
V2 =	4.59 FPS	V25 =	10.16 FPS
CHW =	1063.02 FT	CHW =	1068.96 FT
Q5 =	5,120 CFS	Q50 =	13,100 CFS
V5 =	6.39 FPS	V50 =	11.84 FPS
CHW =	1065.11 FT	CHW =	1070.69 FT
Q10 =	7,310 CFS	Q100 =	15,600 CFS
V10 =	7.57 FPS	V100 =	13.17 FPS
CHW =	1066.68 FT	CHW =	1071.74 FT
Qot = Q39			

BRIDGE "A" - 115' X 26' CLEAR ROADWAY INTEGRAL PCB SPAN SKEWED ZERO DEGREES WITH TR-3 CONCRETE RAILS. CENTERLINE STATION 28+73.30.

EXISTING STRUCTURE - 5-10' CONCRETE SLAB SPAN BRIDGE. (REMOVE)

STR. NO. 1	STA. 23+75.00 LT.	CONST. 28" X 20" X 30 L.F.	CGSPA W/PCES EACH END
STR. NO. 2	STA. 24+54.00 RT.	CONST. 28" X 20" X 38 L.F.	CGSPA W/PCES EACH END
STR. NO. 3	STA. 26+50.00 RT.	CONST. 35" X 24" X 30 L.F.	CGSPA W/PCES EACH END
STR. NO. 4	STA. 26+74.00 LT.	CONST. 35" X 24" X 28 L.F.	CGSPA W/PCES EACH END
STR. NO. 5	STA. 27+88.00	77.40' LT. CRL CONST. 28" X 20" X 32 L.F.	CGSPA W/PCES EACH END
STR. NO. 6	STA. 28+16.00	TEMPORARY CONST. 28" X 20" X 30 L.F.	CGSPA
STR. NO. 7	STA. 28+82.30	TEMPORARY CONST. 4'-48" X 50 L.F.	CGSPS
STR. NO. 8	STA. 30+35.00	INLET E RT. 1061.56	OUTLET E LT. 1060.49



16+00 17+00 18+00 19+00 20+00 21+00 22+00 23+00 24+00 25+00 26+00 27+00 28+00 29+00 30+00 31+00